

THE ENABLER GROUP

The BizTalk Utilities Mail Schema

Overview

The aim of the document is to provide of the BizTalk Utilities Mail Schema. The Schema is used by all BizTalk Utilities Transports that relate to the sending and receiving of Email messages.

By default no Property Schema exists for the SMTP Event Sink nor any of the Email related Adapters. This needs to be built and deployed to BizTalk Server before attempting to use any of the Email Transports.

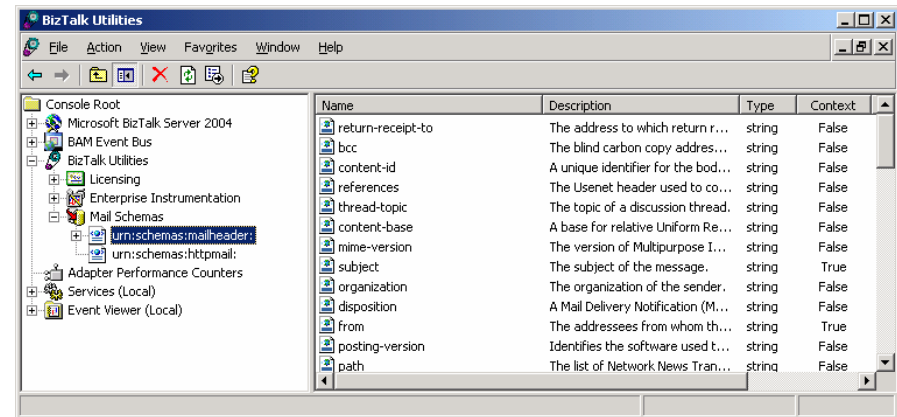
In addition the Schema is also used when specifying criteria for filtering incoming mail messages from an Email Transport.

Building and deploying the sample property schema

1. Run Visual Studio .NET.
2. Open the Samples Solution located in C:\Program Files\BizTalk Utilities\Samples\Samples.sln.
3. Right-Click on the BTSUtils.Mail.Schemas.Properties Project and select Deploy.
4. Ensure that the Project was successfully built and deployed and that there were no Cryptographic failures.

Modifying the Mail Schema

The Mail Schema basically contains a set of namespaces that is used by CDOEX. These can be modified to your will and needs. The Schema can be modified from the BizTalk Utilities Administration Snap-In.



You can add new Namespaces and Properties here, or simply modify the default schema.

Schema Item Properties

The screenshot shows a dialog box titled 'bcc' with a close button. The main area is labeled 'Schema Item' and contains the text 'Properties for the Schema Item'. Below this is a tree view with two expandable nodes: 'BizTalk Server' and 'Item'. The 'Item' node is expanded, showing a table of properties:

Context	False
Promote	False
Property	bcc
(Name)	bcc
Description	The blind carbon copy addressees of the n
FullName	urn:schemas:mailheader:bcc

Below the table, there is a section for '(Name)' with the text 'Specifies the Name of the Schema Item.' At the bottom of the dialog are three buttons: '< Back', 'Finish', and 'Cancel'.

Schema Item Properties that can be set is as follows:

Context Specifies if the Schema Item should be a context property. When set to true, the Receive Transport will make this a context property when processing an Email message. The property will also be included in the Property Schema that is generated when updating the Property Schema.

Promote Specifies if the Property should be promoted when a mail message is processed by an Email transport. The Context Property must be true, in order to set the Promote Property to true.

Property This is simply an information property that will show you the name of the item when a Property Schema is generated for the item.

Name Specifies the unique name of the Schema Item.

Description Provides an optional description for the Schema Item.

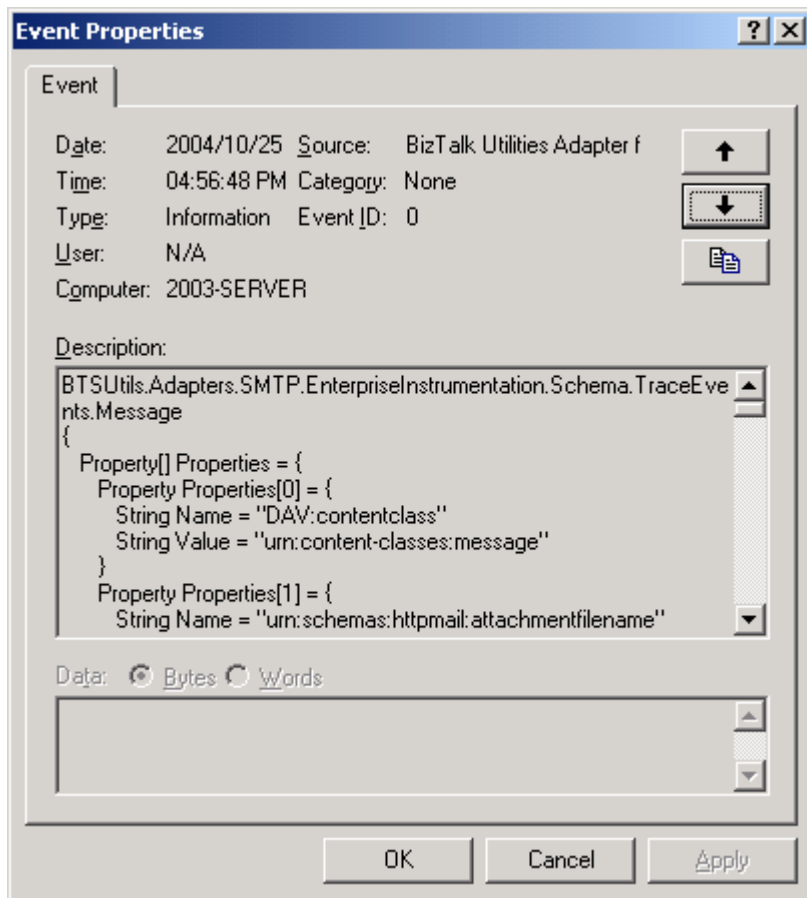
FullName Specifies the name of the Schema Item as it will appear in the CDOEX library.

Namespace Specifies the Namespace for the Schema Item.

Type Specifies the XSD Type of the Schema Item. The default is string.

Locating the Schema Items for a specific Email Message

Every Receive Adapter logs an EIF Event when it receives a Message, detailing all of the Field values for the Email message.



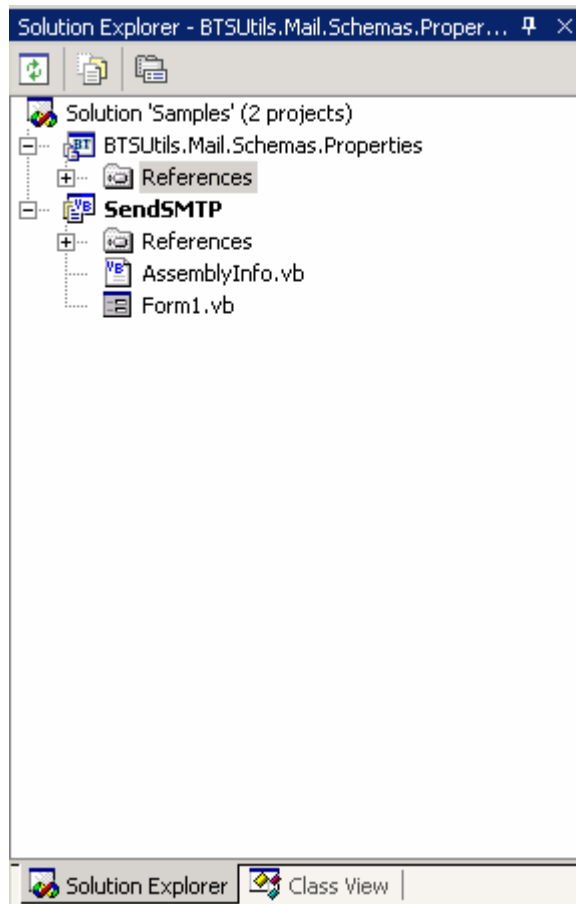
In Order to modify the Property Schema, please perform the following steps:

5. Run Visual Studio .NET.
6. Open the Samples Solution located in C:\Program Files\BizTalk Utilities\Samples\Samples.sln.
7. Delete all Existing Schemas within the BTSUtils.Mail.Schemas.Properties Project.

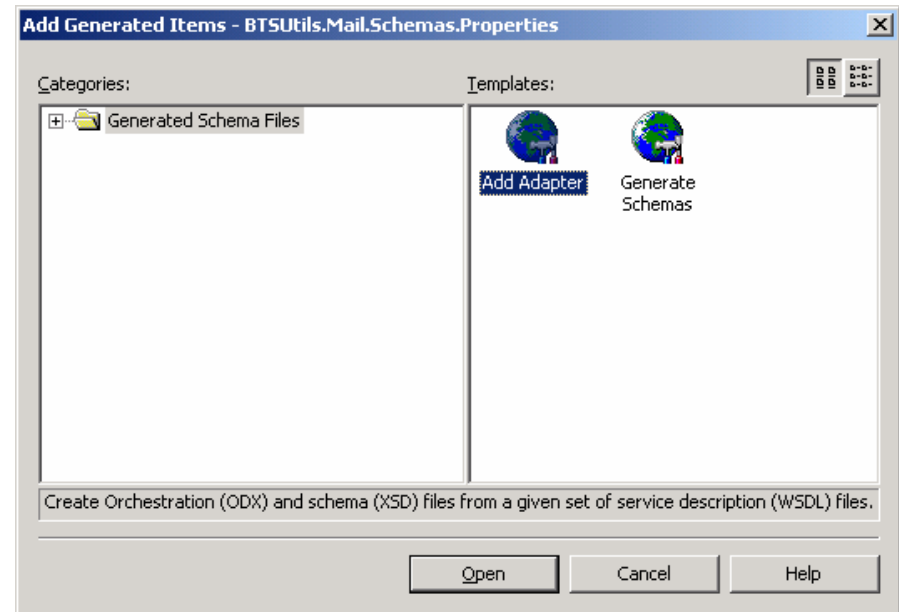
In addition, new values can be obtained from the Exchange SDK that is available from Microsoft.

Updating the Property Schemas

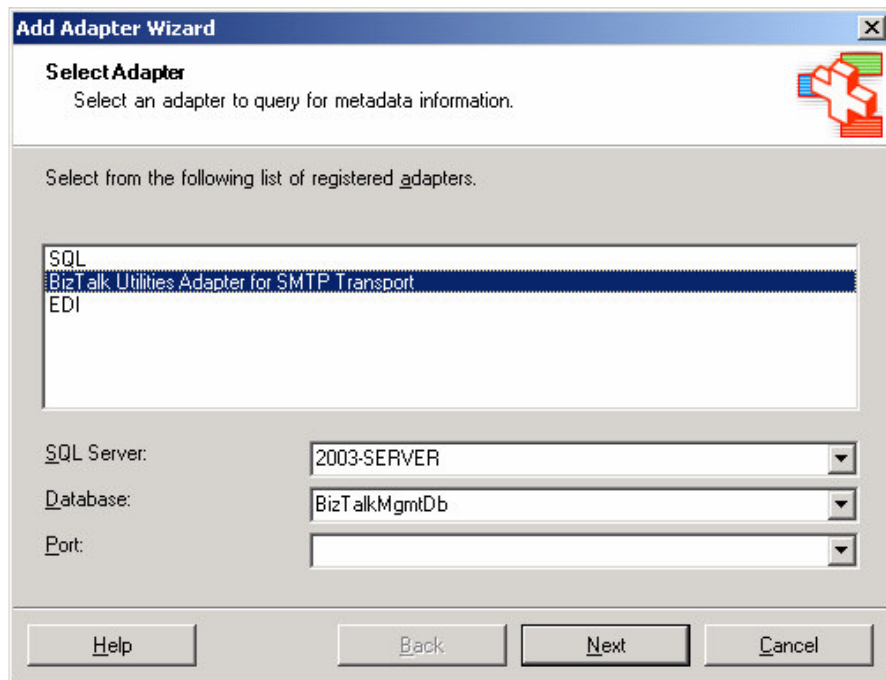
The Property Schema that is deployed within BizTalk Server would have to be updated every time the Mail Schemas are updated. It is important to note that only a single one of these Property Schemas can be deployed within BizTalk Server.



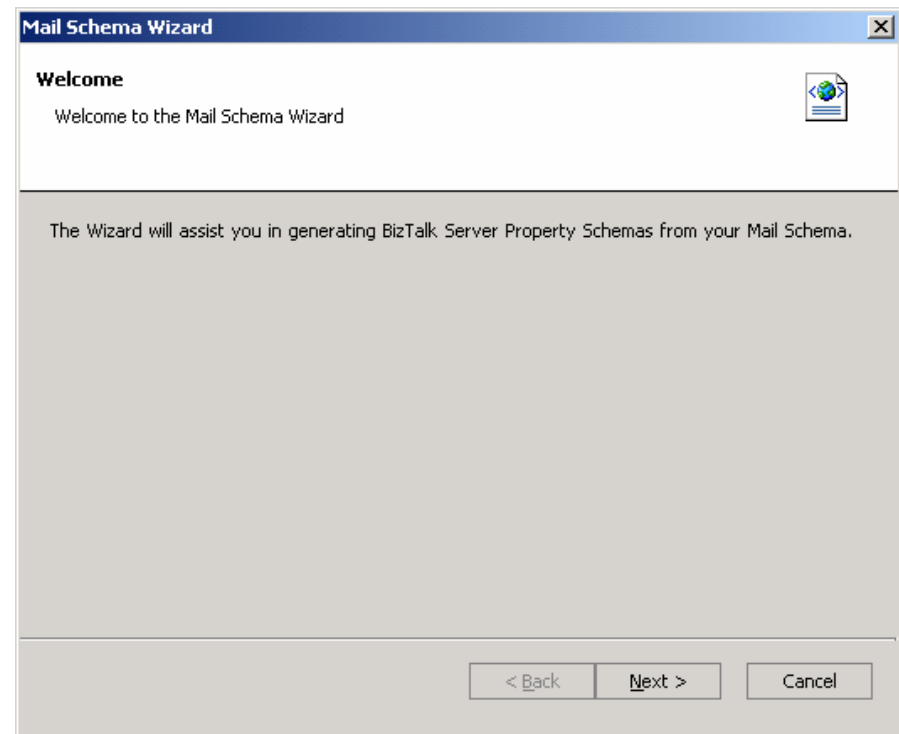
8. Right-Click on the BTSUtils.Mail.Schemas.Properties Project and select Add/Add Generated Items...



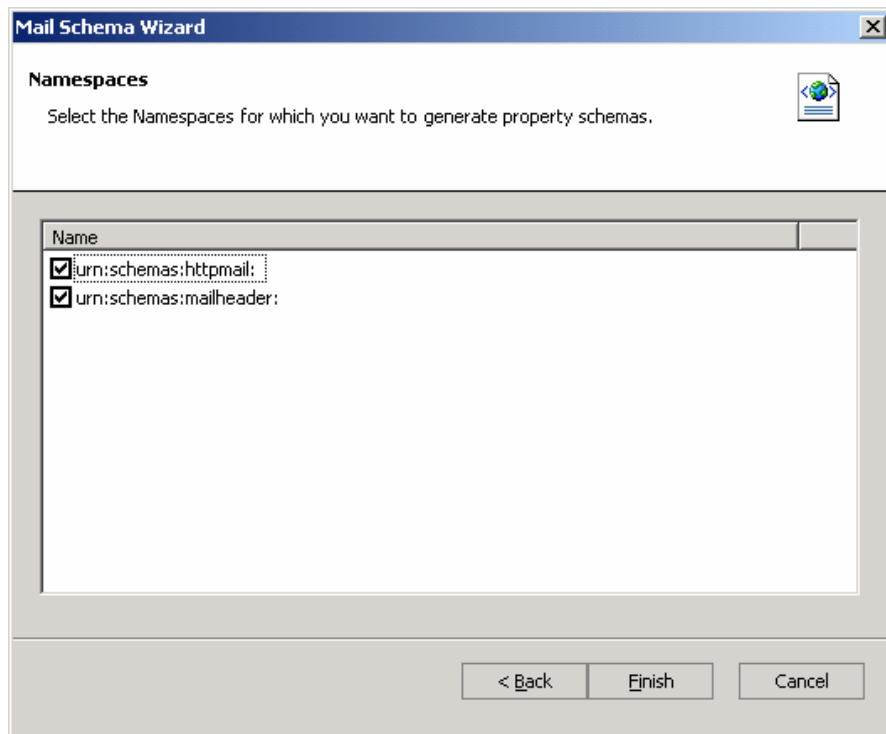
9. Select Add Adapter and click on the Open Button.



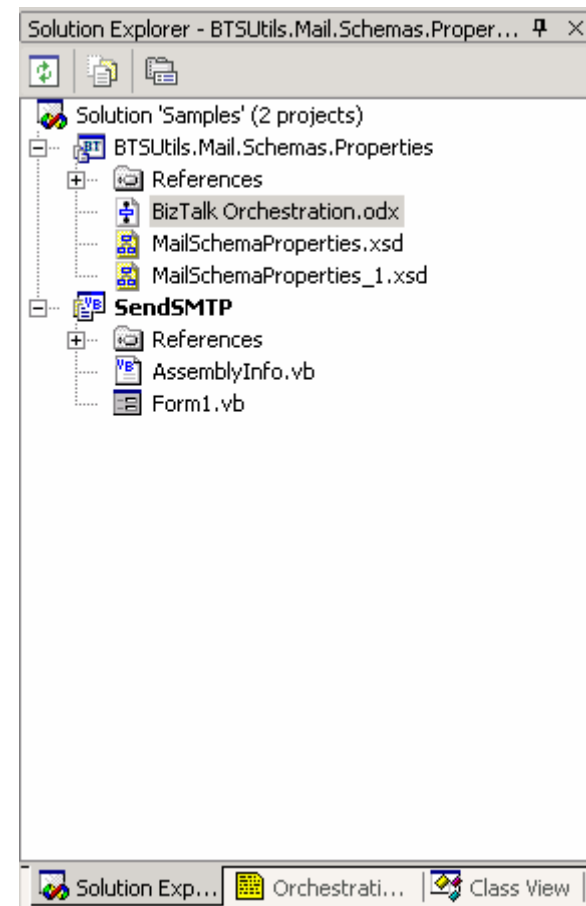
10. Select any of the BizTalk Utilities Mail Transports. For this example we will use the SMTP Transport. Click on the Next Button to continue.



11. The Mail Schema Wizard window will appear. Click on the Next button to continue.



12. Select the Namespaces for which you want to generate the Property Schemas. Click on the Finish button to continue.
13. The Schemas will now be imported to the Project.



14. You can delete the Orchestration that was created with the import process.
15. Right-Click on the BTSUtils.Mail.Schemas.Properties Project and select Deploy.
16. Ensure that the Project was successfully built and deployed and that there were no Cryptographic failures.

17. Your updated schema is now deployed and the updated Schema Items can be used within BizTalk Server.

```
<?xml version="1.0" encoding="utf-16" ?>
- <xs:schema xmlns:b="http://schemas.microsoft.com/BizTalk/2003" targetNamespace="urn:schemas:mailheader:"
  xmlns:xs="http://www.w3.org/2001/XMLSchema"
- <xs:annotation>
- <xs:appinfo>
  <b:schemaInfo schema_name="urn:schemas:mailheader:" document_type="urn:schemas:mailheader:"
    version="1.0.0" schema_type="property" xmlns:b="http://schemas.microsoft.com/BizTalk/2003" />
</xs:appinfo>
</xs:annotation>
- <xs:element name="subject" type="xs:string">
- <xs:annotation>
- <xs:appinfo>
  <b:fieldInfo propertyGuid="dac48d72-f765-4495-9065-60548adbff2b" notes="The subject of the
    message." propSchFieldBase="MessageContextPropertyBase"
    xmlns:b="http://schemas.microsoft.com/BizTalk/2003" />
</xs:appinfo>
</xs:annotation>
</xs:element>
- <xs:element name="from" type="xs:string">
- <xs:annotation>
- <xs:appinfo>
  <b:fieldInfo propertyGuid="fef38edd-dedf-4bc0-b5fc-c464861b2d25" notes="The addressees from whom
    the message was sent." propSchFieldBase="MessageContextPropertyBase"
    xmlns:b="http://schemas.microsoft.com/BizTalk/2003" />
</xs:appinfo>
</xs:annotation>
</xs:element>
- <xs:element name="importance" type="xs:string">
- <xs:annotation>
- <xs:appinfo>
  <b:fieldInfo propertyGuid="70b3583f-8f16-48a2-bd1e-0c0d5758b997" notes="Indicates the level of
    importance for a message as either low, normal, or high."
    propSchFieldBase="MessageContextPropertyBase"
    xmlns:b="http://schemas.microsoft.com/BizTalk/2003" />
</xs:appinfo>
</xs:annotation>
</xs:element>
- <xs:element name="sender" type="xs:string">
- <xs:annotation>
- <xs:appinfo>
  <b:fieldInfo propertyGuid="2496c3c7-f298-4f07-860d-c0e61b93af3d" notes="The sender of the message."
    propSchFieldBase="MessageContextPropertyBase"
    xmlns:b="http://schemas.microsoft.com/BizTalk/2003" />
</xs:appinfo>
</xs:annotation>
</xs:element>
```